

IMPLANTACIÓN aprox.:

FONDO NEGRO ( +/- 8 m)

PATA (+/- 5,8m)  
Bambalina (+/- 5,6m)

Lx 3 (+/- 4,60m)

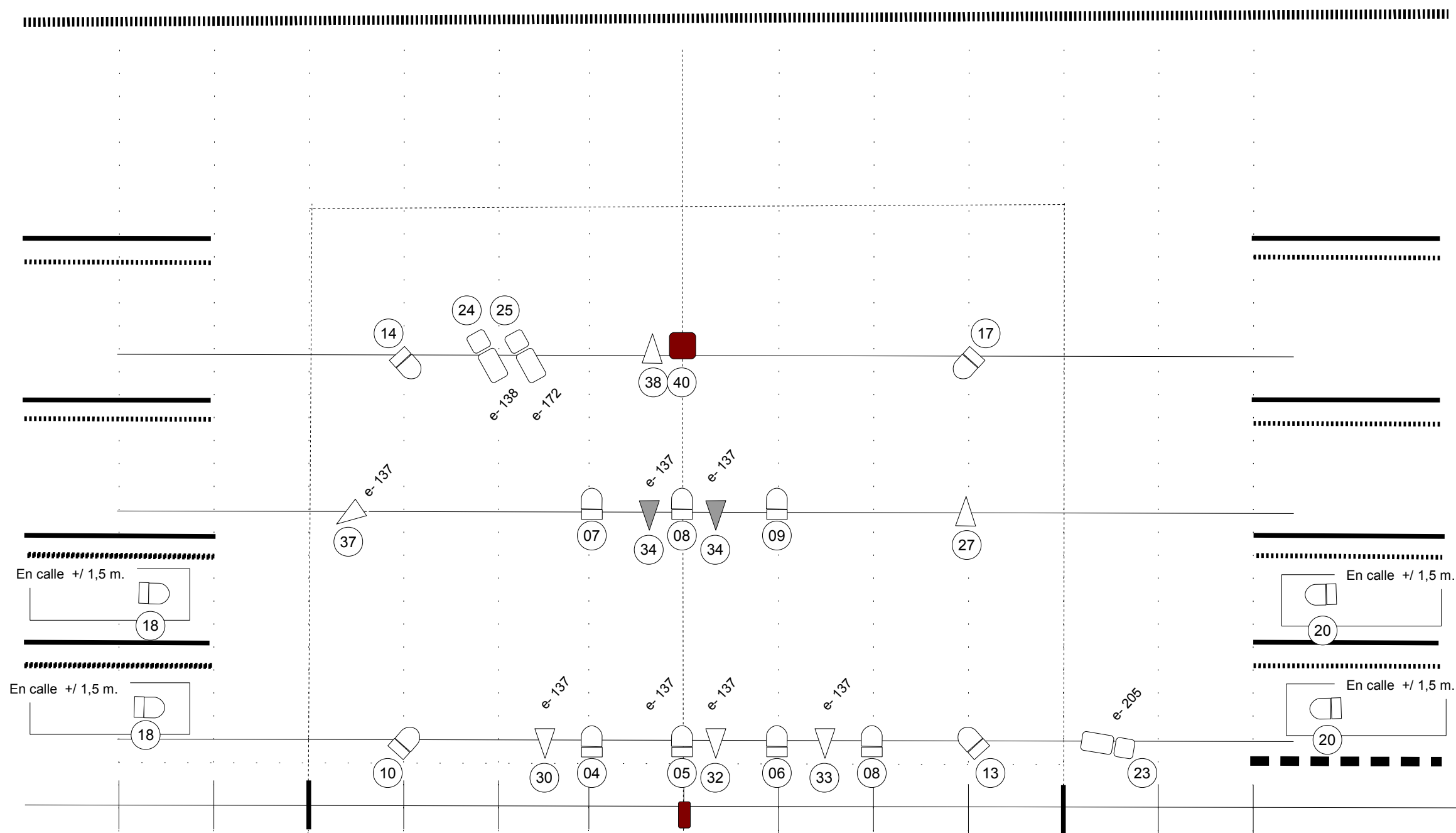
PATA (+/- 3,8m)  
Bambalina (+/- 3,6m)

Lx 2 (+/- 3m)  
PATA (+/- 2,8m)  
Bambalina (+/- 2,6m)

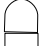

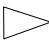




PATA (+/- 1,4m)  
Bambalina (+ 1,2m)

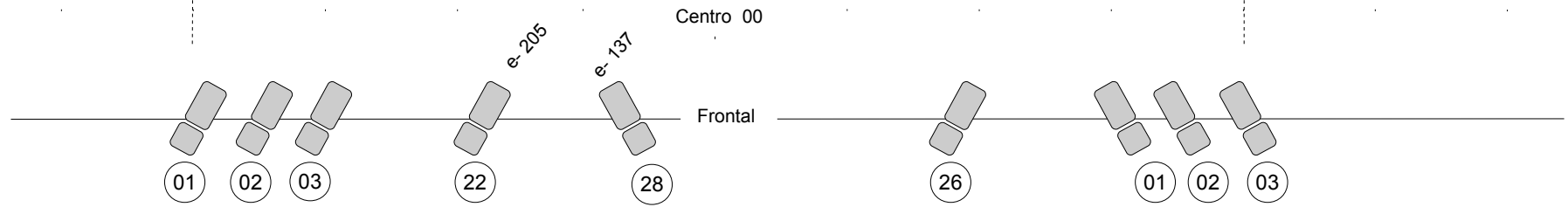
Lx 1 (+/- 0,5m)  
Telón de Boca (+ 0,0m)

1m. / 1m.



**LEYENDA: Versión Reducida**

-  14 P. C. / FRESNEL 1 kw.
-  12 Recortes 25/50° 1kw. (Los de Frontal 15/30°)  
(Algunos pueden ser sustituidos por P.C. 1kw)
-  6 PAR 64 CP 62. 1kw.
-  2 PAR 64 CP 61. 1kw.
-  48 Canales de Dimers 2kw. C/u.
-  PAR 36 (F1) Concentraluz 100w (Cia.)
-  Ventilador (Lanza papeles)



**CRECER de Maxi Rodriguez**

El callejón del gato

Iluminación: Rafa Echeverz